

Amblewood Dr between Kentwood Terr and Lochwood Cres

November 23, 2020 To November 26, 2020



The data presented here is for information purposes only and should not be considered authoritative for construction, geotechnical, engineering, navigational, legal, or other site-specific uses. The information shared is owned by the Transportation Division of the Engineering Department at the District of Saanich. Accuracy is not guaranteed.

Start Date: 23-Nov-20
 Start Time: 22:04
 Station ID: C0001-01

Location 1: Amblewood Dr between Kentwood Terr and Lochwood Cres

Note: Nov 24 speeds appear to be inconsistent.

DATE:	November 23, 2020		November 24, 2020		November 25, 2020		November 26, 2020		November 27, 2020		WK AVG		WK AVG	HOURLY
	MON		TUE		WED		THURS		FRI		NB	SB	CH 1+2	%
Time:	NB	SB	NB	SB	NB	SB	NB	SB	NB	SB	NB	SB		
12-1 AM			0	0	1	0	0	0			0	0	0	0.0%
1-2 AM			0	0	1	0	0	1			0	0	1	0.1%
2-3 AM			2	2	1	1	0	0			1	1	2	0.3%
3-4 AM			0	0	1	0	1	0			1	0	1	0.1%
4-5 AM			0	1	0	1	1	2			0	1	2	0.2%
5-6 AM			1	1	0	1	0	2			0	1	2	0.2%
6-7 AM			3	6	1	7	2	5			2	6	8	1.0%
7-8 AM			9	25	8	20	4	25			7	23	30	3.8%
8-9 AM			26	33	23	33	27	35			25	34	59	7.4%
9-10 AM			26	40	24	31	26	33			25	35	60	7.6%
10-11 AM			27	39	34	39	28	23			30	34	63	8.0%
11-12 PM			35	26	39	30	31	30			35	29	64	8.0%
12-1 PM			39	26	39	30	39	37			39	31	70	8.8%
1-2 PM			29	31	35	31	43	29			36	30	66	8.3%
2-3 PM			39	34	45	38	46	36			43	36	79	10.0%
3-4 PM			47	37	54	38	49	35			50	37	87	10.9%
4-5 PM			34	11	50	23	42	29			42	21	63	7.9%
5-6 PM			34	11	39	18	37	15			37	15	51	6.5%
6-7 PM			22	15	24	7	18	15			21	12	34	4.2%
7-8 PM			13	8	10	8	19	10			14	9	23	2.9%
8-9 PM			14	3	13	6	9	4			12	4	16	2.1%
9-10 PM			3	0	8	3	8	4			6	2	9	1.1%
10-11 PM	8	2	1	0	4	0	3	0			4	1	5	0.6%
11-12 AM	0	0	1	0	0	2	0	0			0	1	1	0.1%
LANES			405	349	454	367	433	370			432	362	794	100.0%
TOTAL			754		821		803				800			
	MON		TUE		WED		THURS		FRI		WK AVG			

PEAK HOUR					TOTAL VEHICALS-PEAK PERIODS		2 HOUR PEAK INTERVALS				
MAX. 7 - 9 am PEAK HOUR	59	⇒	7.4%	between 8-9 AM	337	⇒	6 HR TOTAL	2 HR AM (7 - 9 AM)			
MAX. 7 - 11 am PEAK HOUR	63	⇒	8.0%	between 10-11 AM	204	⇒	4 HR TOTAL	VEH / HR	VEH / 2HR	2 HR %	
MAX. 11 am - 1 pm PEAK HOUR	70	⇒	8.8%	between 12-1 PM				7-8 AM	30	89	11.2%
MAX. 11 am - 3 pm PEAK HOUR	79	⇒	10.0%	between 2-3 PM				8-9 AM	59		
MAX. 4 - 6 pm PEAK HOUR	63	⇒	7.9%	between 4-5 PM				2 HR NOON (11 - 1 PM)			
MAX. 3 - 6 pm PEAK HOUR	87	⇒	10.9%	between 3-4 PM				VEH / HR	VEH / 2HR	2 HR %	
								11-12 PM	64	134	16.8%
								12-1 PM	70		
								2 HR PM (4 - 6 PM)			
								VEH / HR	VEH / 2HR	2 HR %	
								4-5 PM	63	114	14.4%
								5-6 PM	51		

Amblewood Dr between Kentwood Terr and Lochwood Cres

Northbound

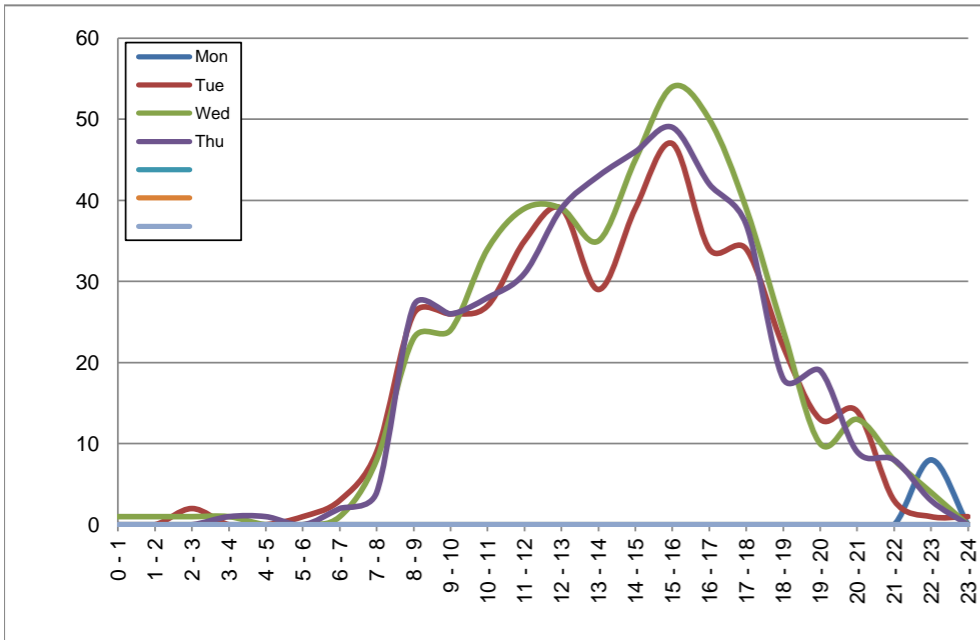
November 23, 2020 to November 26, 2020

Hourly Volumes

Time Period	Mon	Tue	Wed	Thu			
	Nov 23	Nov 24	Nov 25	Nov 26			
0 - 1		0	1	0			
1 - 2		0	1	0			
2 - 3		2	1	0			
3 - 4		0	1	1			
4 - 5		0	0	1			
5 - 6		1	0	0			
6 - 7		3	1	2			
7 - 8		9	8	4			
8 - 9		26	23	27			
9 - 10		26	24	26			
10 - 11		27	34	28			
11 - 12		35	39	31			
12 - 13		39	39	39			
13 - 14		29	35	43			
14 - 15		39	45	46			
15 - 16		47	54	49			
16 - 17		34	50	42			
17 - 18		34	39	37			
18 - 19		22	24	18			
19 - 20		13	10	19			
20 - 21		14	13	9			
21 - 22		3	8	8			
22 - 23	8	1	4	3			
23 - 24	0	1	0	0			
Day Total		405	454	433			

15-Minute Volumes

Time Start	Mon	Tue	Wed	Thu			
	Nov 23	Nov 24	Nov 25	Nov 26			
0:00		0	1	0			
0:15		0	0	0			
0:30		0	0	0			
0:45		0	0	0			
1:00		0	1	0			
1:15		0	0	0			
1:30		0	0	0			
1:45		0	0	0			
2:00		0	0	0			
2:15		0	0	0			
2:30		1	1	0			
2:45		1	0	0			
3:00		0	1	0			
3:15		0	0	0			
3:30		0	0	1			
3:45		0	0	0			
4:00		0	0	0			
4:15		0	0	0			
4:30		0	0	1			
4:45		0	0	0			
5:00		0	0	0			
5:15		0	0	0			
5:30		1	0	0			
5:45		0	0	0			
6:00		0	0	0			
6:15		1	1	0			
6:30		0	0	0			
6:45		2	0	2			
7:00		1	0	0			
7:15		4	3	1			
7:30		1	2	0			
7:45		3	3	3			
8:00		4	5	5			
8:15		6	3	4			
8:30		9	9	9			
8:45		7	6	9			
9:00		10	8	7			
9:15		5	5	6			
9:30		6	4	4			
9:45		5	7	9			
10:00		9	5	11			
10:15		4	11	8			
10:30		5	7	4			
10:45		9	11	5			
11:00		8	12	5			
11:15		14	12	8			
11:30		8	9	5			
11:45		5	6	13			
12:00			12	11	5		
12:15			11	8	16		
12:30			7	9	10		
12:45			9	11	8		
13:00			8	10	9		
13:15			4	9	8		
13:30			12	8	12		
13:45			5	8	14		
14:00			7	14	14		
14:15			11	8	9		
14:30			10	11	9		
14:45			11	12	14		
15:00			8	13	13		
15:15			13	11	16		
15:30			12	16	6		
15:45			14	14	14		
16:00			14	14	14		
16:15			9	10	10		
16:30			9	10	12		
16:45			2	16	6		
17:00			15	15	10		
17:15			6	10	7		
17:30			7	9	10		
17:45			6	5	10		
18:00			5	7	3		
18:15			11	7	4		
18:30			4	3	3		
18:45			2	7	8		
19:00			4	2	3		
19:15			5	2	7		
19:30			2	2	5		
19:45			2	4	4		
20:00			2	3	1		
20:15			5	3	4		
20:30			5	5	1		
20:45			2	2	3		
21:00			1	3	3		
21:15			1	2	2		
21:30			0	2	1		
21:45			1	1	2		
22:00	4	1	3	2			
22:15	0	0	1	0			
22:30	3	0	0	0			
22:45	1	0	0	1			
23:00	0	0	0	0			
23:15	0	1	0	0			
23:30	0	0	0	0			
23:45	0	0	0	0			



Site notes:

Amblewood Dr between Kentwood Terr and Lochwood Cres

Southbound

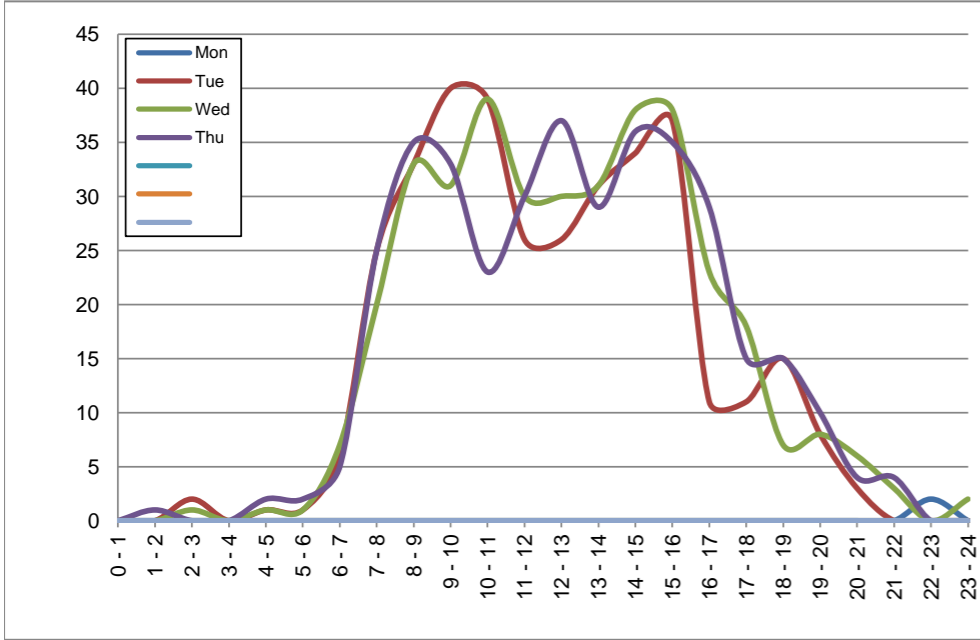
November 23, 2020 to November 26, 2020

Hourly Volumes

Time Period	Mon	Tue	Wed	Thu			
	Nov 23	Nov 24	Nov 25	Nov 26			
0 - 1		0	0	0			
1 - 2		0	0	1			
2 - 3		2	1	0			
3 - 4		0	0	0			
4 - 5		1	1	2			
5 - 6		1	1	2			
6 - 7		6	7	5			
7 - 8		25	20	25			
8 - 9		33	33	35			
9 - 10		40	31	33			
10 - 11		39	39	23			
11 - 12		26	30	30			
12 - 13		26	30	37			
13 - 14		31	31	29			
14 - 15		34	38	36			
15 - 16		37	38	35			
16 - 17		11	23	29			
17 - 18		11	18	15			
18 - 19		15	7	15			
19 - 20		8	8	10			
20 - 21		3	6	4			
21 - 22		0	3	4			
22 - 23	2	0	0	0			
23 - 24	0	0	2	0			
Day Total		349	367	370			

15-Minute Volumes

Time Start	Mon	Tue	Wed	Thu			
	Nov 23	Nov 24	Nov 25	Nov 26			
0:00		0	0	0			
0:15		0	0	0			
0:30		0	0	0			
0:45		0	0	0			
1:00		0	0	0			
1:15		0	0	1			
1:30		0	0	0			
1:45		0	0	0			
2:00		0	0	0			
2:15		1	0	0			
2:30		0	0	0			
2:45		1	1	0			
3:00		0	0	0			
3:15		0	0	0			
3:30		0	0	0			
3:45		0	0	0			
4:00		1	0	0			
4:15		0	1	1			
4:30		0	0	0			
4:45		0	0	1			
5:00		0	1	0			
5:15		0	0	0			
5:30		0	0	1			
5:45		1	0	1			
6:00		1	0	0			
6:15		0	1	0			
6:30		4	4	2			
6:45		1	2	3			
7:00		2	4	3			
7:15		3	0	5			
7:30		9	7	6			
7:45		11	9	11			
8:00		3	8	11			
8:15		8	4	5			
8:30		15	10	12			
8:45		7	11	7			
9:00		14	15	5			
9:15		11	2	6			
9:30		11	9	10			
9:45		4	5	12			
10:00		9	5	4			
10:15		13	15	7			
10:30		8	7	9			
10:45		9	12	3			
11:00		5	6	8			
11:15		8	9	6			
11:30		5	7	9			
11:45		8	8	7			
12:00			9	5	9		
12:15			8	8	12		
12:30			8	9	6		
12:45			1	8	10		
13:00			5	6	7		
13:15			7	4	8		
13:30			8	10	7		
13:45			11	11	7		
14:00			6	14	4		
14:15			4	8	16		
14:30			12	8	7		
14:45			12	8	9		
15:00			6	6	10		
15:15			17	12	10		
15:30			8	12	7		
15:45			6	8	8		
16:00			2	8	9		
16:15			3	4	6		
16:30			4	4	8		
16:45			2	7	6		
17:00			4	3	2		
17:15			2	5	6		
17:30			4	2	3		
17:45			1	8	4		
18:00			3	2	6		
18:15			5	1	5		
18:30			2	1	2		
18:45			5	3	2		
19:00			2	1	4		
19:15			1	1	0		
19:30			3	4	1		
19:45			2	2	5		
20:00			1	2	3		
20:15			1	2	0		
20:30			1	1	0		
20:45			0	1	1		
21:00			0	1	2		
21:15			0	1	1		
21:30			0	1	0		
21:45			0	0	1		
22:00	1	0	0	0			
22:15	0	0	0	0			
22:30	0	0	0	0			
22:45	1	0	0	0			
23:00	0	0	1	0			
23:15	0	0	0	0			
23:30	0	0	1	0			
23:45	0	0	0	0			



Site notes:

Vehicle Speed Summary

Saanich Engineering Department

Count Id: C0001-01

Filename: Amblewood Dr between Kentwood Terr and Lochwood Cres-Nov-2020.xlsm

Location: Amblewood Dr between Kentwood Terr and Lochwood Cres

Note: Nov 24 speeds appear to be inconsistent.

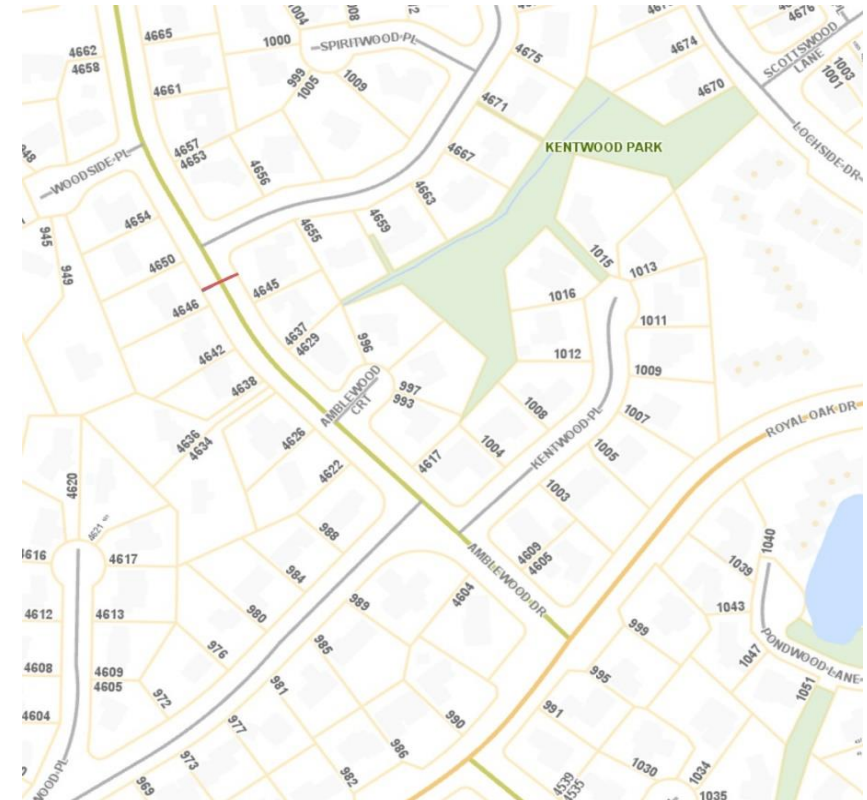
Direction: **North-South**

Dates: **November 23, 2020 To November 26, 2020**

Filtered data

AVG. SPEED	26 mph	42 km/h
50 % SPEED	27 mph	43 km/h
85 % SPEED	33 mph	53 km/h
95 % SPEED	36 mph	58 km/h

Location Map



Amblewood Dr between Kentwood Terr and Lochwood Cres

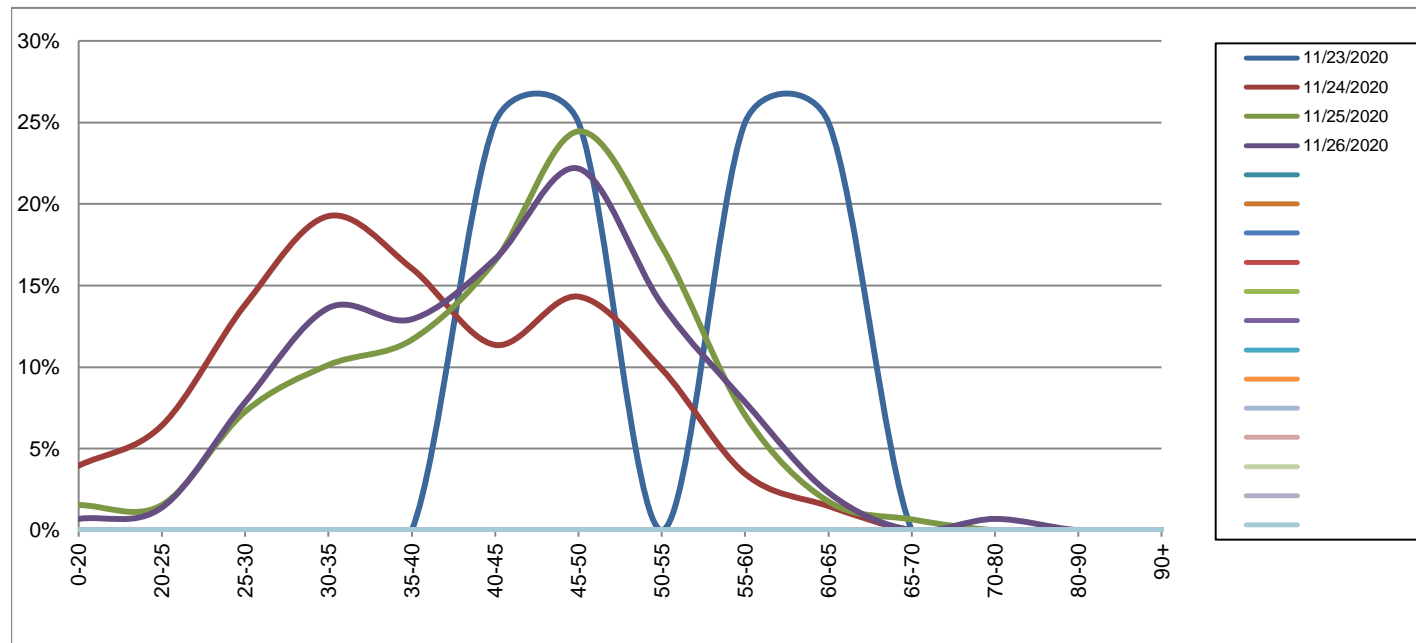
Northbound

November 23, 2020 to November 26, 2020

Daily Speed Bin Percentages															Daily Speed Bin Volumes														Total	Avg.
Bin #	1	2	3	4	5	6	7	8	9	10	11	12	13	14	1	2	3	4	5	6	7	8	9	10	11	12	13	14	Volume	Speed
Bin Speeds	0-20	20-25	25-30	30-35	35-40	40-45	45-50	50-55	55-60	60-65	65-70	70-80	80-90	90+	0-20	20-25	25-30	30-35	35-40	40-45	45-50	50-55	55-60	60-65	65-70	70-80	80-90	90+		
11/23/2020	0.0%	0.0%	0.0%	0.0%	0.0%	25.0%	25.0%	0.0%	25.0%	25.0%	0.0%	0.0%	0.0%	0.0%	0	0	0	0	0	2	2	0	2	2	0	0	0	0	8	53
11/24/2020	4.0%	6.4%	13.8%	19.3%	16.0%	11.4%	14.3%	9.9%	3.5%	1.5%	0.0%	0.0%	0.0%	0.0%	16	26	56	78	65	46	58	40	14	6	0	0	0	0	405	38
11/25/2020	1.5%	1.5%	7.3%	10.1%	11.7%	16.5%	24.4%	17.4%	7.0%	1.8%	0.7%	0.0%	0.0%	0.0%	7	7	33	46	53	75	111	79	32	8	3	0	0	0	454	44
11/26/2020	0.7%	1.4%	7.9%	13.6%	12.9%	16.6%	22.2%	13.9%	7.9%	2.3%	0.0%	0.7%	0.0%	0.0%	3	6	34	59	56	72	96	60	34	10	0	3	0	0	433	43
Total	2.0%	3.0%	9.5%	14.1%	13.4%	15.0%	20.5%	13.8%	6.3%	2.0%	0.2%	0.2%	0.0%	0.0%	26	39	123	183	174	195	267	179	82	26	3	3	0	0	1300	42

Speed Data Summary

Bin #	1	2	3	4	5	6	7	8	9	10	11	12	13	14	Total
Bin Speeds	0-20	20-25	25-30	30-35	35-40	40-45	45-50	50-55	55-60	60-65	65-70	70-80	80-90	90+	
Survey Total	26	39	123	183	174	195	267	179	82	26	3	3	0	0	1300
% Total	2.0%	3.0%	9.5%	14.1%	13.4%	15.0%	20.5%	13.8%	6.3%	2.0%	0.2%	0.2%	0.0%	0.0%	100%
Accumulated %	2.0%	5.0%	14.5%	28.5%	41.9%	56.9%	77.5%	91.2%	97.5%	99.5%	99.8%	100.0%	100.0%	100%	
Inverse Accum. %	98.0%	95.0%	85.5%	71.5%	58.1%	43.1%	22.5%	8.8%	2.5%	0.5%	0.2%	0.0%	0.0%	0.0%	
Average Speed	42 KM/H														



Site notes:

Amblewood Dr between Kentwood Terr and Lochwood Cres

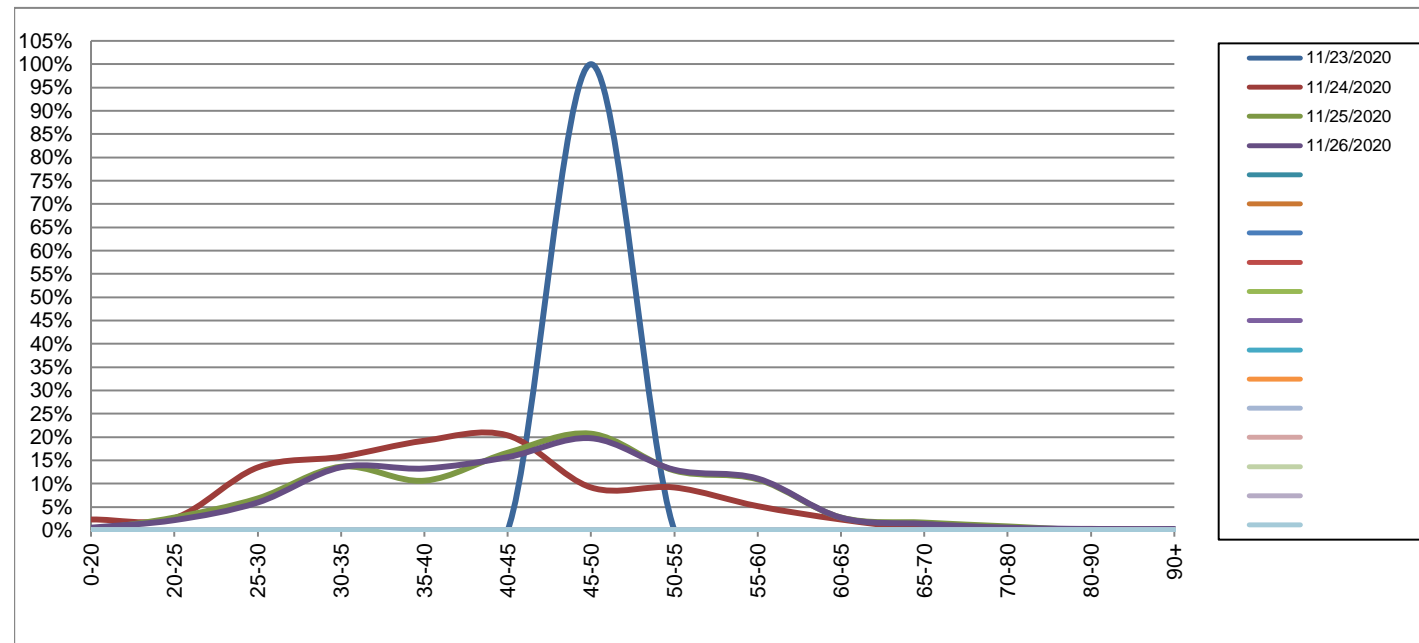
Southbound

November 23, 2020 to November 26, 2020

Daily Speed Bin Percentages															Daily Speed Bin Volumes														Total	Avg.
Bin #	1	2	3	4	5	6	7	8	9	10	11	12	13	14	1	2	3	4	5	6	7	8	9	10	11	12	13	14	Volume	Speed
Bin Speeds	0-20	20-25	25-30	30-35	35-40	40-45	45-50	50-55	55-60	60-65	65-70	70-80	80-90	90+	0-20	20-25	25-30	30-35	35-40	40-45	45-50	50-55	55-60	60-65	65-70	70-80	80-90	90+		
11/23/2020	0.0%	0.0%	0.0%	0.0%	0.0%	0.0%	100.0%	0.0%	0.0%	0.0%	0.0%	0.0%	0.0%	0.0%	0	0	0	0	0	0	2	0	0	0	0	0	0	0	2	48
11/24/2020	2.3%	2.6%	13.5%	15.8%	19.2%	20.3%	9.2%	9.2%	5.2%	2.3%	0.3%	0.0%	0.3%	0.0%	8	9	47	55	67	71	32	32	18	8	1	0	1	0	349	39
11/25/2020	0.0%	2.7%	6.8%	13.6%	10.6%	16.6%	20.7%	12.8%	10.9%	2.7%	1.6%	0.8%	0.0%	0.0%	0	10	25	50	39	61	76	47	40	10	6	3	0	0	367	44
11/26/2020	0.5%	2.2%	5.9%	13.5%	13.2%	15.7%	19.7%	13.0%	11.1%	2.7%	1.4%	0.5%	0.3%	0.3%	2	8	22	50	49	58	73	48	41	10	5	2	1	1	370	44
Total	0.9%	2.5%	8.6%	14.2%	14.2%	17.5%	16.8%	11.7%	9.1%	2.6%	1.1%	0.5%	0.2%	0.1%	10	27	94	155	155	190	183	127	99	28	12	5	2	1	1088	43

Speed Data Summary

Bin #	1	2	3	4	5	6	7	8	9	10	11	12	13	14	Total
Bin Speeds	0-20	20-25	25-30	30-35	35-40	40-45	45-50	50-55	55-60	60-65	65-70	70-80	80-90	90+	
Survey Total	10	27	94	155	155	190	183	127	99	28	12	5	2	1	1088
% Total	0.9%	2.5%	8.6%	14.2%	14.2%	17.5%	16.8%	11.7%	9.1%	2.6%	1.1%	0.5%	0.2%	0.1%	100%
Accumulated %	0.9%	3.4%	12.0%	26.3%	40.5%	58.0%	74.8%	86.5%	95.6%	98.2%	99.3%	99.7%	99.9%	100%	
Inverse Accum. %	99.1%	96.6%	88.0%	73.7%	59.5%	42.0%	25.2%	13.5%	4.4%	1.8%	0.7%	0.3%	0.1%	0.0%	
Average Speed	43 KM/H														



Site notes:

Amblewood Dr between Kentwood Terr and Lochwood Cres

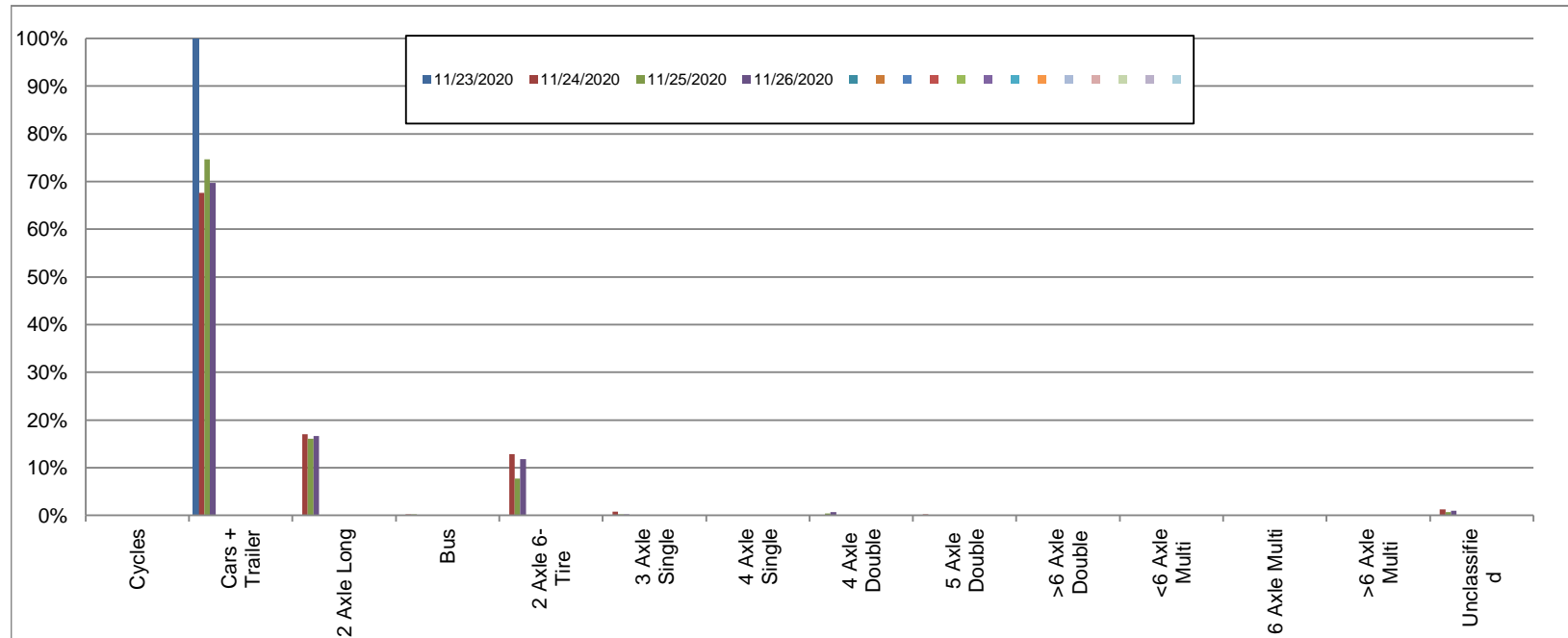
Northbound

November 23, 2020 to November 26, 2020

Daily Class Bin Percentages															Daily Class Bin Volumes															
Bin #	1	2	3	4	5	6	7	8	9	10	11	12	13	14	1	2	3	4	5	6	7	8	9	10	11	12	13	14	Total Volume	
Bin Class	Cycles	Cars + Trailer	2 Axle Long	Bus	2 Axle 6-Tire	3 Axle Single	4 Axle Single	4 Axle Double	5 Axle Double	>6 Axle Double	<6 Axle Multi	6 Axle Multi	>6 Axle Multi	Unclassified	Cycles	Cars + Trailer	2 Axle Long	Bus	2 Axle 6-Tire	3 Axle Single	4 Axle Single	4 Axle Double	5 Axle Double	>6 Axle Double	<6 Axle Multi	6 Axle Multi	>6 Axle Multi	Unclassified		
11/23/2020	0.0%	100.0%	0.0%	0.0%	0.0%	0.0%	0.0%	0.0%	0.0%	0.0%	0.0%	0.0%	0.0%	0.0%	0	8	0	0	0	0	0	0	0	0	0	0	0	0	0	8
11/24/2020	0.0%	67.7%	17.0%	0.2%	12.8%	0.7%	0.0%	0.0%	0.2%	0.0%	0.0%	0.0%	0.0%	1.2%	0	274	69	1	52	3	0	0	1	0	0	0	0	0	5	405
11/25/2020	0.0%	74.7%	16.1%	0.2%	7.7%	0.2%	0.0%	0.4%	0.0%	0.0%	0.0%	0.0%	0.0%	0.7%	0	339	73	1	35	1	0	2	0	0	0	0	0	3	454	
11/26/2020	0.0%	69.7%	16.6%	0.0%	11.8%	0.2%	0.0%	0.7%	0.0%	0.0%	0.0%	0.0%	0.0%	0.9%	0	302	72	0	51	1	0	3	0	0	0	0	0	4	433	
Total	0.0%	71.0%	16.5%	0.2%	10.6%	0.4%	0.0%	0.4%	0.1%	0.0%	0.0%	0.0%	0.0%	0.9%	0	923	214	2	138	5	0	5	1	0	0	0	0	12	1300	

Class Data Summary

Bin #	1	2	3	4	5	6	7	8	9	10	11	12	13	14	Total Volume
Bin Class	Cycles	Cars + Trailer	2 Axle Long	Bus	2 Axle 6-Tire	3 Axle Single	4 Axle Single	4 Axle Double	5 Axle Double	>6 Axle Double	<6 Axle Multi	6 Axle Multi	>6 Axle Multi	Unclassified	Total Volume
Survey Total	0	923	214	2	138	5	0	5	1	0	0	0	0	12	1300
% Total	0.0%	71.0%	16.5%	0.2%	10.6%	0.4%	0.0%	0.4%	0.1%	0.0%	0.0%	0.0%	0.0%	0.9%	100%
Accumulated %	0.0%	71.0%	87.5%	87.6%	98.2%	98.6%	98.6%	99.0%	99.1%	99.1%	99.1%	99.1%	99.1%	100.0%	
Inv. Accum. %	100.0%	29.0%	12.5%	12.4%	1.8%	1.4%	1.4%	1.0%	0.9%	0.9%	0.9%	0.9%	0.9%	0.0%	



Classification Descriptions

Bin #	Bin Description
1	Motorcycles
2	Passenger cars, including those with recreational trailers
3	2-axle pick-ups, vans, and RVs, including those with recreational trailers
4	Buses
5	2-axle, 6-tire single units
6	3-axle single units
7	4-axle single units
8	3-axle or 4-axle double unit
9	5-axle double unit
10	6-, 7-, or 8-axle double unit
11	5-axle multiple unit
12	6-axle multiple unit
13	7-or-more-axle multiple unit
14	Vehicles that could not be classified

Site notes:

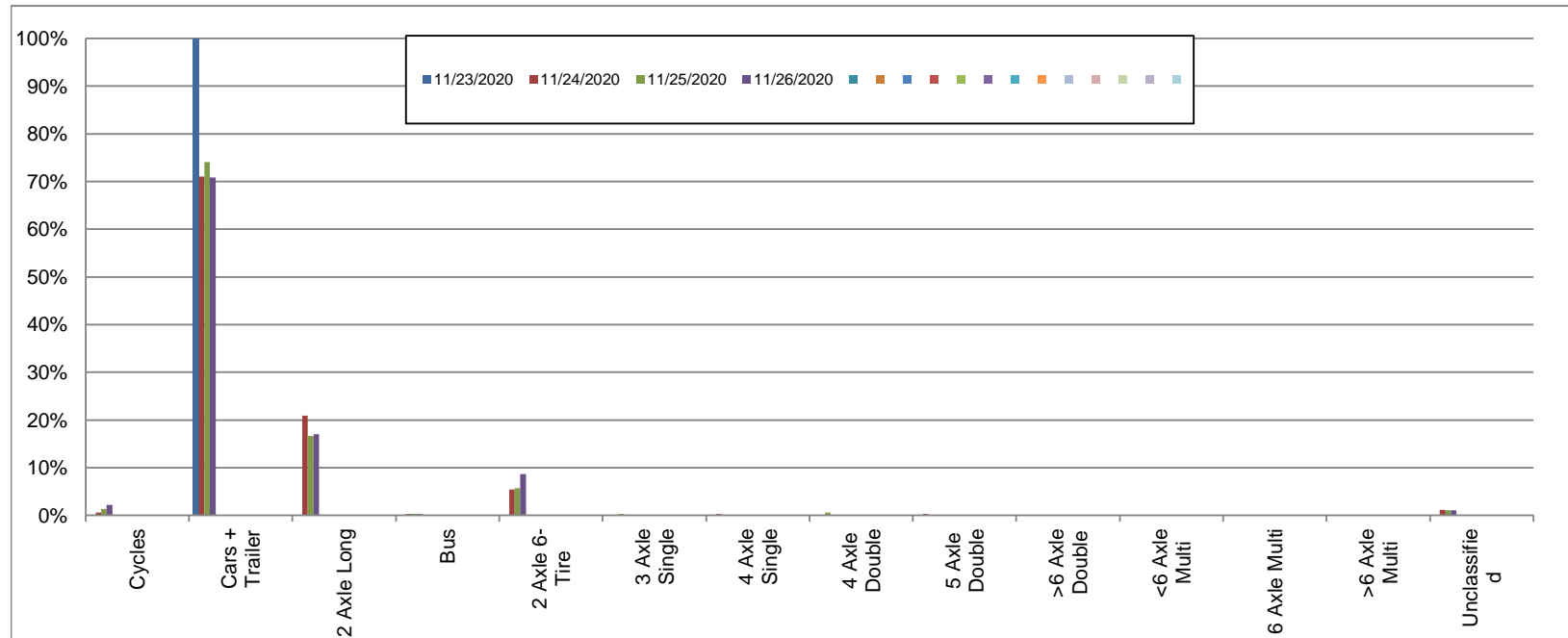
Amblewood Dr between Kentwood Terr and Lochwood Cres

Southbound
November 23, 2020 to November 26, 2020

Daily Class Bin Percentages															Daily Class Bin Volumes											Total Volume				
Bin #	1	2	3	4	5	6	7	8	9	10	11	12	13	14	1	2	3	4	5	6	7	8	9	10	11		12	13	14	
Bin Class	Cycles	Cars + Trailer	2 Axle Long	Bus	2 Axle 6-Tire	3 Axle Single	4 Axle Single	4 Axle Double	5 Axle Double	>6 Axle Double	<6 Axle Multi	6 Axle Multi	>6 Axle Multi	Unclassified	Cycles	Cars + Trailer	2 Axle Long	Bus	2 Axle 6-Tire	3 Axle Single	4 Axle Single	4 Axle Double	5 Axle Double	>6 Axle Double	<6 Axle Multi	6 Axle Multi	>6 Axle Multi	Unclassified		
11/23/2020	0.0%	100.0%	0.0%	0.0%	0.0%	0.0%	0.0%	0.0%	0.0%	0.0%	0.0%	0.0%	0.0%	0.0%	0	2	0	0	0	0	0	0	0	0	0	0	0	0	0	2
11/24/2020	0.6%	71.1%	20.9%	0.3%	5.4%	0.0%	0.3%	0.0%	0.3%	0.0%	0.0%	0.0%	0.0%	1.1%	2	248	73	1	19	0	1	0	1	0	0	0	0	0	4	349
11/25/2020	1.4%	74.1%	16.6%	0.3%	5.7%	0.3%	0.0%	0.5%	0.0%	0.0%	0.0%	0.0%	0.0%	1.1%	5	272	61	1	21	1	0	2	0	0	0	0	0	0	4	367
11/26/2020	2.2%	70.8%	17.0%	0.3%	8.6%	0.0%	0.0%	0.0%	0.0%	0.0%	0.0%	0.0%	0.0%	1.1%	8	262	63	1	32	0	0	0	0	0	0	0	0	0	4	370
Total	1.4%	72.1%	18.1%	0.3%	6.6%	0.1%	0.1%	0.2%	0.1%	0.0%	0.0%	0.0%	0.0%	1.1%	15	784	197	3	72	1	1	2	1	0	0	0	0	12	1088	

Class Data Summary

Bin #	1	2	3	4	5	6	7	8	9	10	11	12	13	14	Total Volume
Bin Class	Cycles	Cars + Trailer	2 Axle Long	Bus	2 Axle 6-Tire	3 Axle Single	4 Axle Single	4 Axle Double	5 Axle Double	>6 Axle Double	<6 Axle Multi	6 Axle Multi	>6 Axle Multi	Unclassified	Total Volume
Survey Total	15	784	197	3	72	1	1	2	1	0	0	0	0	12	1088
% Total	1.4%	72.1%	18.1%	0.3%	6.6%	0.1%	0.1%	0.2%	0.1%	0.0%	0.0%	0.0%	0.0%	1.1%	100%
Accumulated %	1.4%	73.4%	91.5%	91.8%	98.4%	98.5%	98.6%	98.8%	98.9%	98.9%	98.9%	98.9%	98.9%	100.0%	
Inv. Accum. %	98.6%	26.6%	8.5%	8.2%	1.6%	1.5%	1.4%	1.2%	1.1%	1.1%	1.1%	1.1%	1.1%	0.0%	



Classification Descriptions

Bin #	Bin Description
1	Motorcycles
2	Passenger cars, including those with recreational trailers
3	2-axle pick-ups, vans, and RVs, including those with recreational trailers
4	Buses
5	2-axle, 6-tire single units
6	3-axle single units
7	4-axle single units
8	3-axle or 4-axle double unit
9	5-axle double unit
10	6-, 7-, or 8-axle double unit
11	5-axle multiple unit
12	6-axle multiple unit
13	7-or-more-axle multiple unit
14	Vehicles that could not be classified

Site notes: